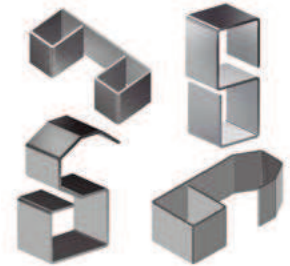


STANDARD TOOLING PROVIDED ALONG WITH THE MACHINE

Folding die at 100 mm · V 16, 22, 35, 50 mm



Folding or bending die up to 100mm with 4 openings (16, 22, 35, 50mm) and a punch of 80°. This multi-V die allows 1mm up to 8mm sheet to be folded. The 70mm outer die diameter punch allows to make completely closed shapes to a minimum of 75mm inner wing.

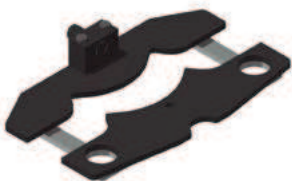


V 16: Sheet from 1 to 3mm
V 22: Sheet from 2 to 4mm
V 35: Sheet from 3 to 6mm
V 50: Sheet from 4 to 8mm
Max. Folding length: 100mm
Max. Folding thickness: 8mm

Download folding chart [PDF](#) ↓

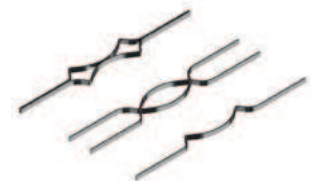
OPTIONAL TOOLING

Baluster forming die 01



REF: 140-16-01-00001
Die to form cold forging balusters for grills, gates, fences, handrails...

For other shapes or capacities, request the manufacturer.



Optional tooling

Max. width	Thickness	Die length	Weight
20mm	4, 5, 6, 8mm	656mm	21Kg

Ring forming



REF: 140-16-01-00003

Die to form rings or English banister railing, used as ornamental piece in forging railings, gates, fences... for bars bonding.

For other shapes or capacities, request the manufacturer.

Optional tooling



Max. width	Thickness	Outer sizes	Weight
50mm	6mm	90mm	9,3Kg

Baluster forming die 04



REF: 140-16-01-00004

Die to form cold forging balusters for grills, gates, fences, handrails...

For other shapes or capacities, request the manufacturer.

Optional tooling



Square sizes	Die length	Weight
5, 6, 8, 10, 12, 14, 16, 18mm	600mm	20,5 Kg

Bending tool for big radius



REF: 140-16-01-00006

Die to form curves in flat bars, pipes, bars or profiles at big radius. It's perfect for bending small series or special parts without requiring a specific custom mold.

Optional tooling



Maximum bar capacity	Maximum pipe capacity	Minimum diameter	Maximum diameter
40mm or 1 1/2"	80x80 mm or 3"	300mm	There is no maximum

Baluster forming die 08



REF: 140-16-01-00008

Die to form cold forging balusters for grills, gates, fences, handrails...

For other shapes or capacities, request the manufacturer.

Optional tooling



Max. width	Thickness	Die length	Weight
20mm	4, 5, 6, 8mm	650mm	19,5Kg

Baluster forming die 09



REF: 140-16-01-00009

Die to form cold forging balusters for grills, gates, fences, handrails...

For other shapes or capacities, request the manufacturer.

Optional tooling



Flat bar size	Die length	Weight
5, 6, 8, 10, 12mm	522mm	22Kg

Baluster forming die 10



REF: 140-16-01-00010

Die to form cold forging balusters shaped parts for grills, so called "belly top railing".

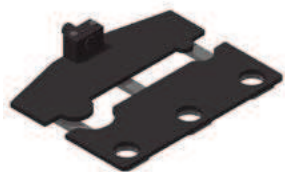
For other shapes or capacities, request the manufacturer.

Optional tooling



Flat bar size	Die length	Weight
12mm	1165mm	50Kg

Baluster forming die 11

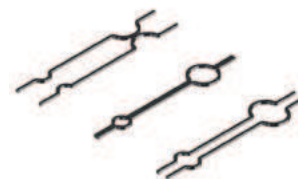


REF: 140-16-01-00011

Die to form cold forging balusters for grills, gates, fences, handrails...

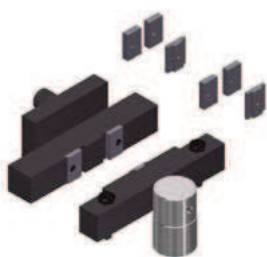
For other shapes or capacities, request the manufacturer.

Optional tooling



Flat bar size	Die length	Weight
6, 8, 10, 12mm	760mm	32,5Kg

Twisted bars forming die



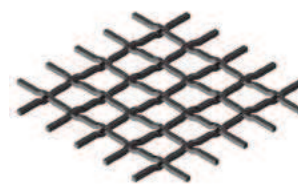
REF: 140-16-01-00013

Die to bend metal plate, flat bar or square bar to obtain a nice braid twisted effect. It's very used to make fences and grills

For flat bar from to 6, 12 and 14mm.

For different sizes, please ask the manufacturer

Optional tooling



Max. capacity	Min. capacity	Weight
Square 14 mm	2x40 mm metal sheet	18Kg

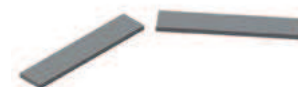
Flat bar cutting tooling 100x10mm



REF: 140-16-01-00014

Flat bar and metal sheet cutting die up to 100mm through a maximum thickness of 10mm in mild steel.

Optional tooling



Max. Cutting length	Max. Cutting thickness	Weight
100mm	10mm	23Kg

Die to bend square or rectangular pipe



REF: 140-16-01-00015

Tool to bend square pipe or bar at given or specific degrees. Technical drawing or sample pieces are required.

Optional tooling



Maximum capacity	Maximum bending
30mm or 1' 1/4 x 3mm thickness	120° - 150°

Tool to shape pipe ends



REF: 140-16-01-00016

Basic die to modify the ends of the tubes for their assembly. You can make all kinds of shapes and flaps according to the customer needs.

For special forms consult the manufacturer.

Optional tooling

Weight: 110 Kg aprox.



Diameter reduction tools



Composed by the clamp holder to reduce tube and the reduction clamp.

This accessory is adapted to the Tooling to shape pipe ends, to perform the operation of reducing the ends of the tubes, for its coupling.

Optional tooling

We can find the different sizes in the following PDF file:



Diameter expansion tools



Composed by the Clamp Holder to Expand, Expansion Mandrel and the Expander Clamp.

This accessory is adapted to the Tooling to shape pipe ends, to perform the operation of expanding the ends of the tubes, for its coupling

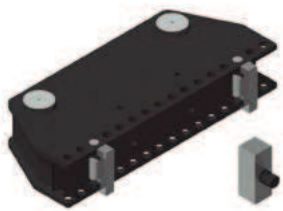


Optional tooling

We can find the different sizes in the following PDF file:



Die to straighten out profiles



REF: 140-16-01-00017

Tool used to bend straight profiles or parts. It is adjustable to different capacities according to the profiles.



Maximum capacity: H 120mm

Weight: 72Kg.

Optional tooling

Die to bend special profiles



REF: 140-16-01-00018

Die to bend or fold different profiles such as U, T angle etc... with other specific radius and degrees. Technical drawing or sample pieces are required.



Optional tooling

Hinges making tool



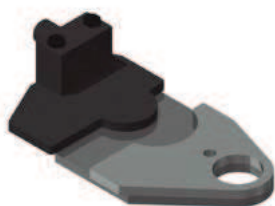
REF: 140-16-01-00019

Die to manufacture hinges depending on the customer's requirements. Technical drawing or sample pieces are needed for the manufacturing.

Optional tooling



Baluster forming die 20



REF: 140-16-01-00011

Die to form cold forging balusters for grills, gates, fences, handrails...

For other shapes or capacities, request the manufacturer.

Optional tooling



Square sizes	Circumference size	Weight
12mm	760mm	32,5Kg

Punching die



REF: 140-16-01-00022

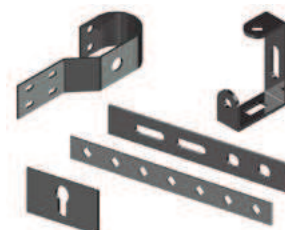
Punch-holder die, compatible with our Nargesa brand punches.

Gooseneck: 54 mm

Free distance of tooling: 95 mm

Weight: 52Kg

Optional tooling



	Round	Square	Rectangular	Oval
Capacidad máx. Punzonado	43mm	35mm	20x34mm	21x40mm

Promecam punch holder



REF: 140-16-01-00023

Punch holder for all kind of punches for Promecam bending or folding press.
Compatible with any Promecam punch.

Optional tooling



Max. Folding length	Weight
150mm	14kg

Clamp forming die



REF: 140-16-01-00024

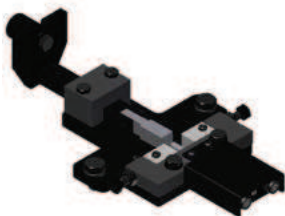
Die to form all kinds of clamps. This tooling is manufactured according to the user's needs thus it is required to have a technical drawing or a sample piece.

Maximum capacity: 100x4mm

Optional tooling



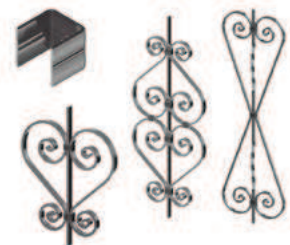
Bar clamps forming die



REF: 140-16-01-00028

Clamp forming die, used to manufacture the clamps used to join different forging bars with no need to get them welded.

Optional tooling



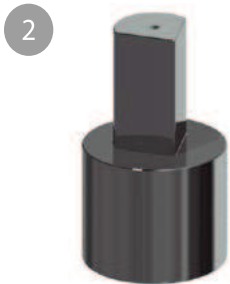
Max. capacity	Weight
25x5mm	9Kg

Special punches

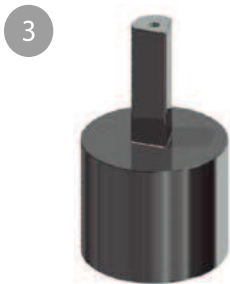
Folding punches to bend special pieces of small sizes or folded up to 30°.



N°1
Folding Punch D70 30°
REF: 140-16-01-00025
Max. Folding length: 100mm
Punch degrees: 30°
Punch diameter: 70mm
Weight: 3Kg approx.



N°2
Folding Punch D40 80°
REF: 140-16-01-00026
Max. Folding length: 60mm
Punch degrees: 80°
Punch diameter: 40mm
Weight: 3Kg approx.



N°3
Folding Punch D22 80°
REF: 140-16-01-00027
Max. Folding length: 60mm
Punch degrees: 80°
Punch diameter: 22mm
Weight: 3Kg approx.

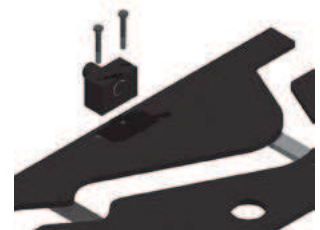
Optional tooling

Forming die adaptor



REF: 140-16-01-00029
It is an exchangeable fitting device for the forming dies, suitable for each of the different baluster forming tools. It is advisable to get one in order to work with the specified dies.

Weight: 3,1 Kg



Optional tooling suitable for all forming dies

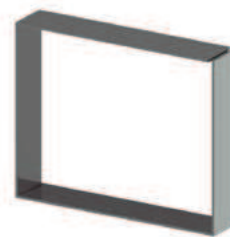
Promecam Punches

Promecam punches of different shapes to bend and manufacture complex part. There are a lot more shapes, please consult the manufacturer.

1



N°1 Punch Promecam PS.135.85.R08 PP200
REF: 140-16-01-00030
Folding length: 150mm
Weight: 3,2 Kg.



2



N°2 Punch Promecam P.95.35.R5 PP200
REF: 140-16-01-00031
Folding length: 150mm
Weight: 2,3Kg.



3



N°3 Punch Promecam PS.134.30.R08 PP200
REF: 140-16-01-00032
Folding length: 150mm
Weight: 2,7Kg.



Optional tooling

Dies to fold thick metal sheet

Promecam dies of diferent openings to fold sheets, flat bars or thicker plate sections up to 15mm. in order to fold even thicker sizes, ask the manufacture.



1

N°1

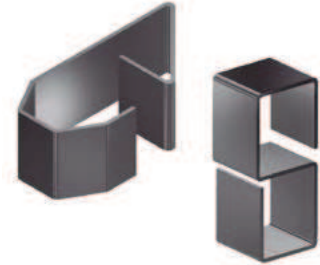
Folding die T80.25.35 PP200

REF: 140-16-01-00036

Folding length: 150mm

Thickness: From 1,5 to 5mm

Weight: 4Kg.



2

N°2

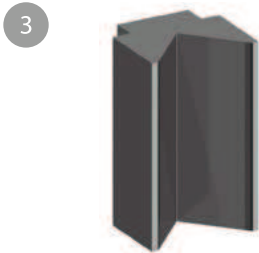
Folding die M75-85-63 PP200

REF: 140-16-01-00033

Folding length: 150mm

Thickness: From 5 to 10mm

Weight: 5Kg.



3

N°3

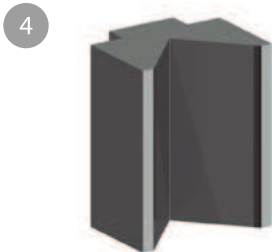
Folding die M80-85-80 PP200

REF: 140-16-01-00034

Folding length: 150mm

Thickness: From 6 to 12mm

Weight: 6Kg.



4

N°4

Folding die M95-80-100 PP200

REF: 140-16-01-00035

Folding length: 150mm

Thickness: From 8 to 15mm

Weight: 9Kg

Optional tooling

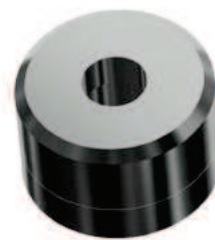
Round, square, oval and rectangular punches and dies



At Nargesa we own a wide catalog for punches and dies of all kinds. If the size the customer needs is not in the list, we manufacture it. In the PDF file you will be able to see all kinds and sizes we have.

Optional tooling

Technical features [PDF](#) ↓



Matriz de abocardar tubo



Dies for notching pipes from $\varnothing 16$ to a $\varnothing 50$ mm. It crops the pipe end so it could be joined perpendicularly to another pipe.

Optional tooling

Technical features [PDF](#) ↓



Matriz redondear esquinas



Die to get metal sheet corners rounded at different radius.

Optional tooling

Technical features [PDF](#) ↓



Matrices de orejetas



Tool to fabricate all kinds of tabs, with or without perforation, straight or rounded... they are very used as clamps, handles etc. Starting from a metal strip, there will be obtained one piece of the desired length at every stroke.

Optional tooling

Technical features [PDF](#) ↓

